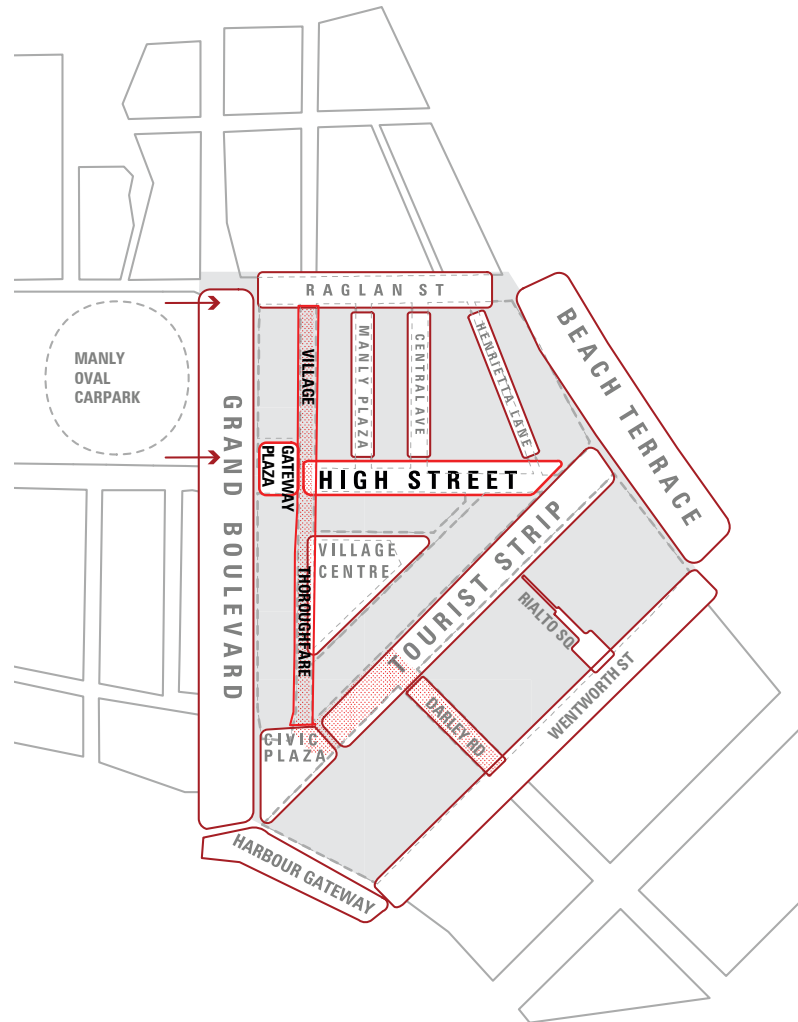




# MANLY 2015

## SYDNEY ROAD REVITALISATION

1.0  
CONTEXT  
TOWN CENTRE SPACES



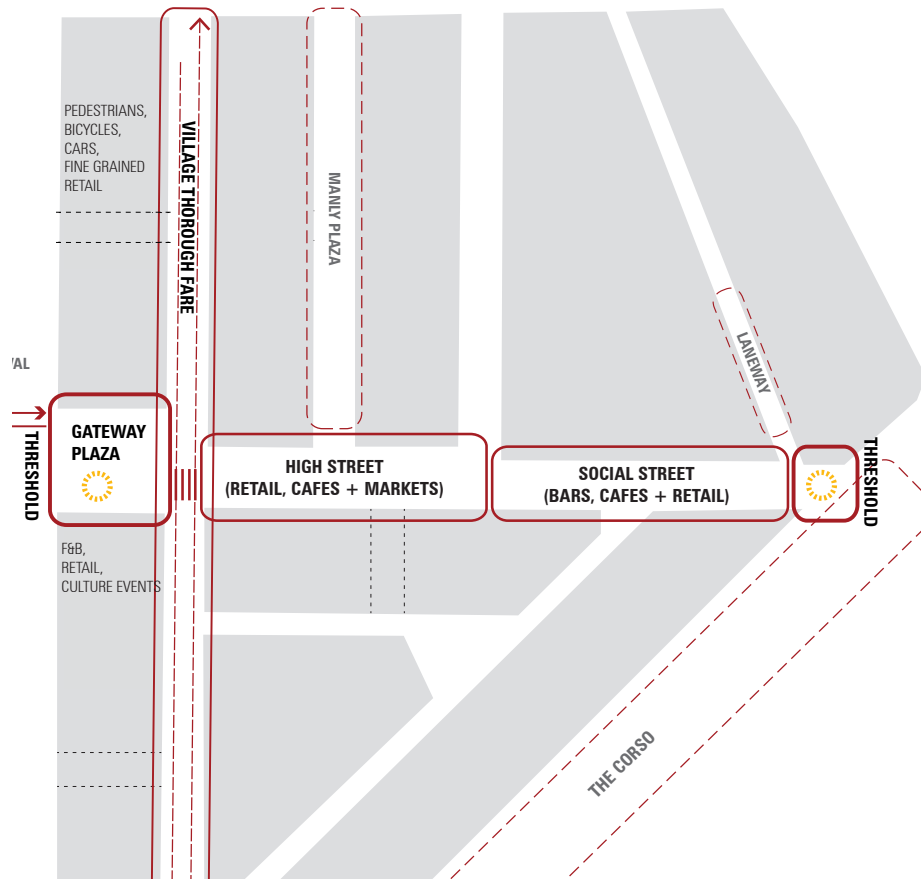
The Manly 2015 plan will deliver a town centre with a diversity of spaces and places for both tourists and the local community. As part of this plan, the new Sydney Road High Street and Gateway Plaza is designed to become a 'locals' oriented pedestrian street to counterbalance The Corso tourist strip. It will become the point of entry to the town centre for locals and Sydneysiders arriving by car, bicycle or on foot from Sydney Road or Pittwater Road. It also becomes the key arrival space for people parking at the future Manly Oval Carpark.

## 2.0 CONCEPT SYDNEY ROAD PROPOSED PLAN



As a partner space to The Corso, the pavement is designed as a 'Boardwalk' that intersects the 'Waves' of The Corso pavement. As the key signature element for the space, it will become known as 'The Boardwalk' upon which the activity and life of the local community plays out.

2.0  
 CONCEPT  
 CHARACTER DIAGRAM



While the Boardwalk will connect pedestrian spaces from Belgrave Street to the beach, it will comprise three sub spaces with differing scale and character. The first, Gateway Plaza has a civic sensibility as the key arrival point into Manly. The second, High Street, is characterised by the existing retail uses and its generous width that allows for temporary markets. The third, the ‘Social Street’ is characterised by the restaurants, takeaways, bars and pubs along its length.

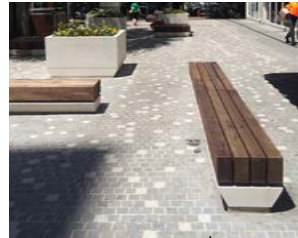
### 3.0 GATEWAY PLAZA PLAN



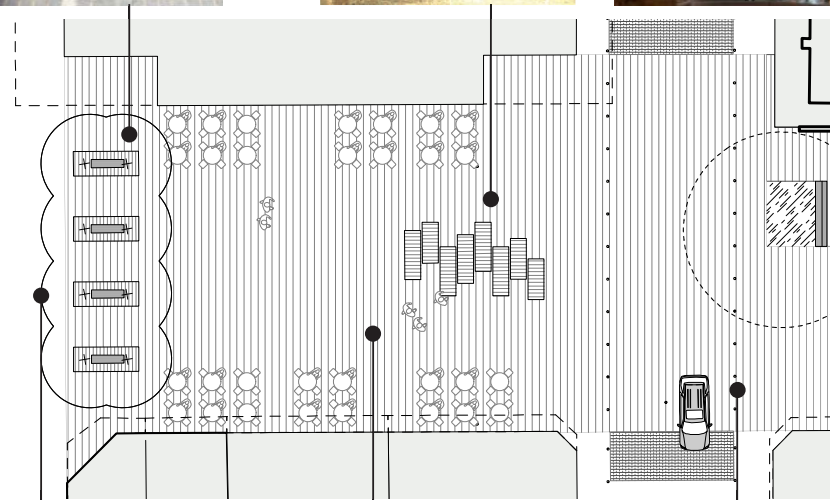
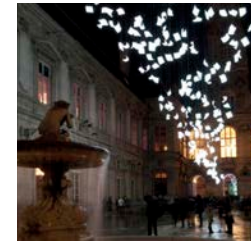
Gateway Plaza has a more civic scale that formally announces arrival into Manly. Generally, the space is open from building face to building face to emphasise spaciousness. Restaurants with alfresco dining line the northern and southern edges while a water feature and suspended lighting installation animate the main public space. A simple bosque of trees forms a green gateway along the western edge to the space while providing a buffer to vehicles in Belgrave Street.

### 3.0 GATEWAY PLAZA KEY FEATURES

BENCH SEATING  
(AS PER SHORT STREET)



WATER FEATURE AND LIGHTING



BOSQUE OF TREES

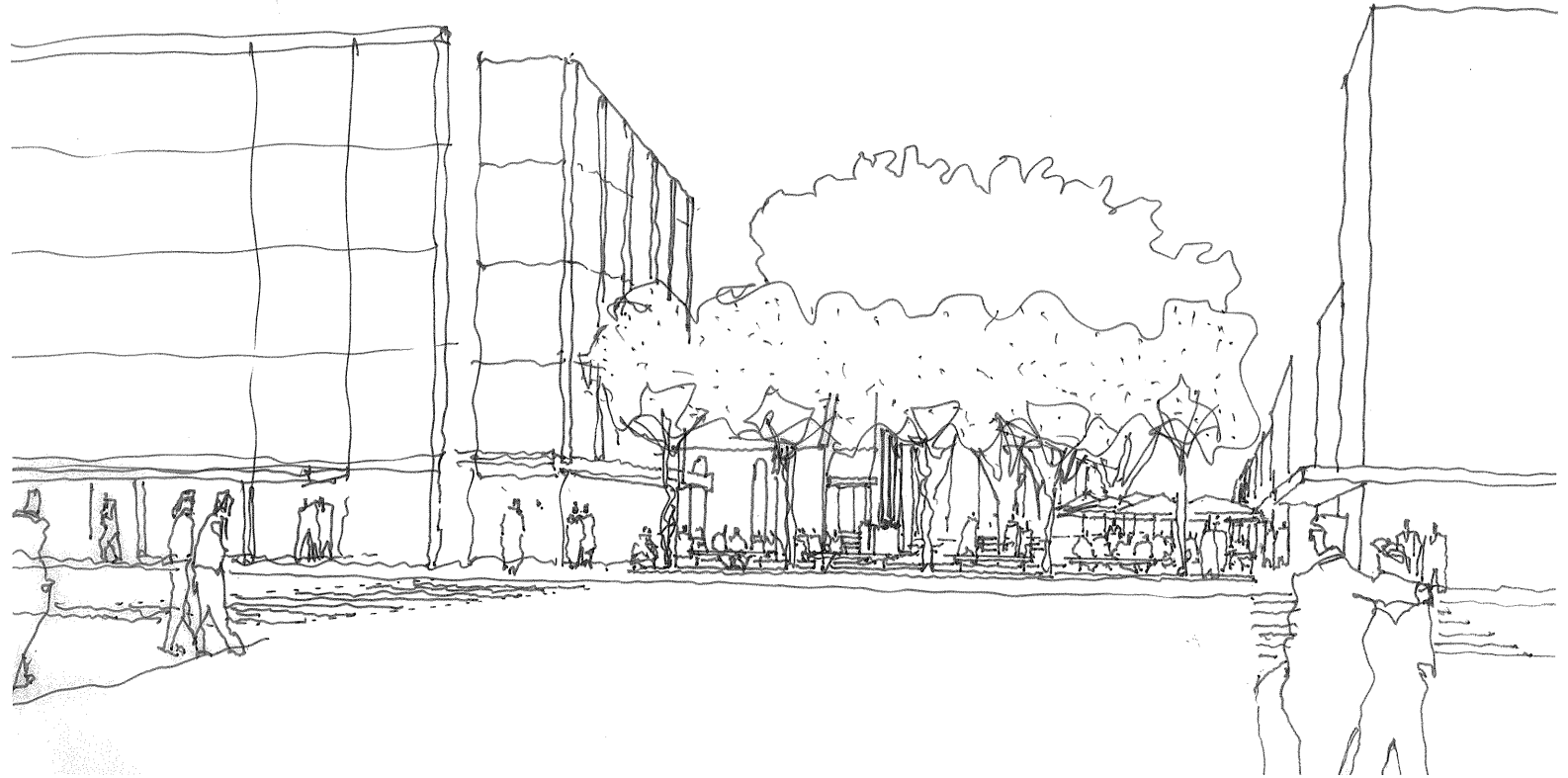


NEW 'BOARDWALK' PAVING

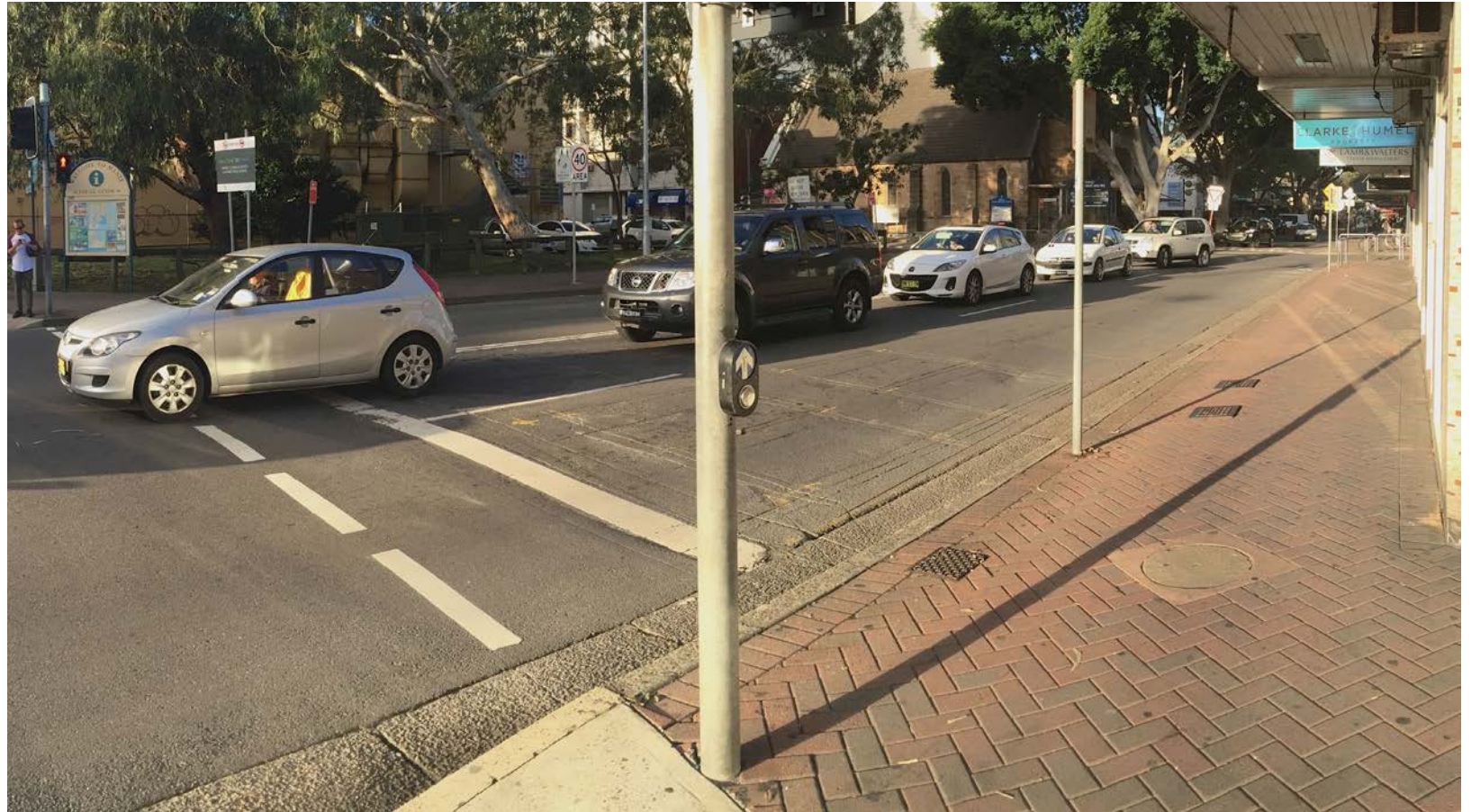


BOLLARDS WITH LIGHTING

3.0  
GATEWAY PLAZA  
SKETCH LOOKING ACROSS BELGRAVE ST.



3.0  
GATEWAY PLAZA  
EXISTING





3.0  
GATEWAY PLAZA  
PROPOSAL



## 4.0 HIGH STREET PLAN



High Street, extends from Whistler Street to Central Avenue with a retail focused character. Its key features are the high quality fine grain buildings along its southern edge, the mature fig trees and the Congregational Church, one of Manly's most important heritage buildings. The space operates as a pedestrian retail street with public seating formally arranged around the fig trees and a generous flexible use central zone for temporary markets.

# 4.0 HIGH STREET KEY FEATURES

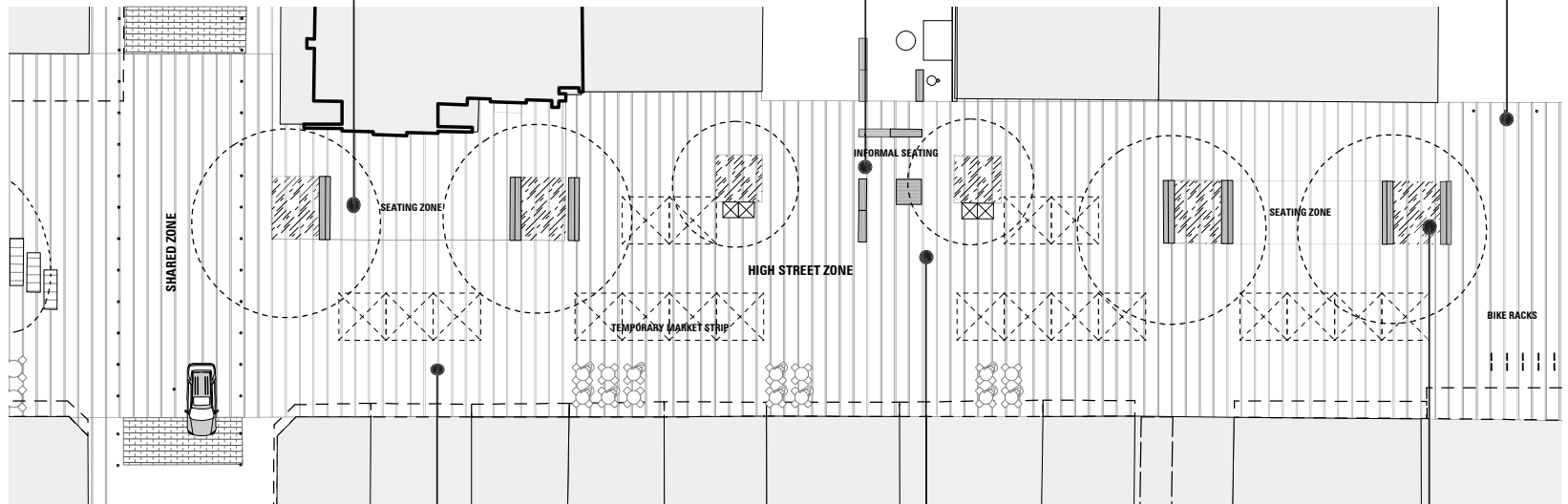
BENCH SEATING  
(AS PER COUNCIL FORECOURT)



SHORT STREET BENCH SEATING



REMOVABLE BOLLARDS



NEW 'BOARDWALK' PAVING



LOOSE INFORMAL SEATING



TREE UP-LIGHTING

4.0  
HIGH STREET  
EXISTING



4.0  
HIGH STREET  
PROPOSAL

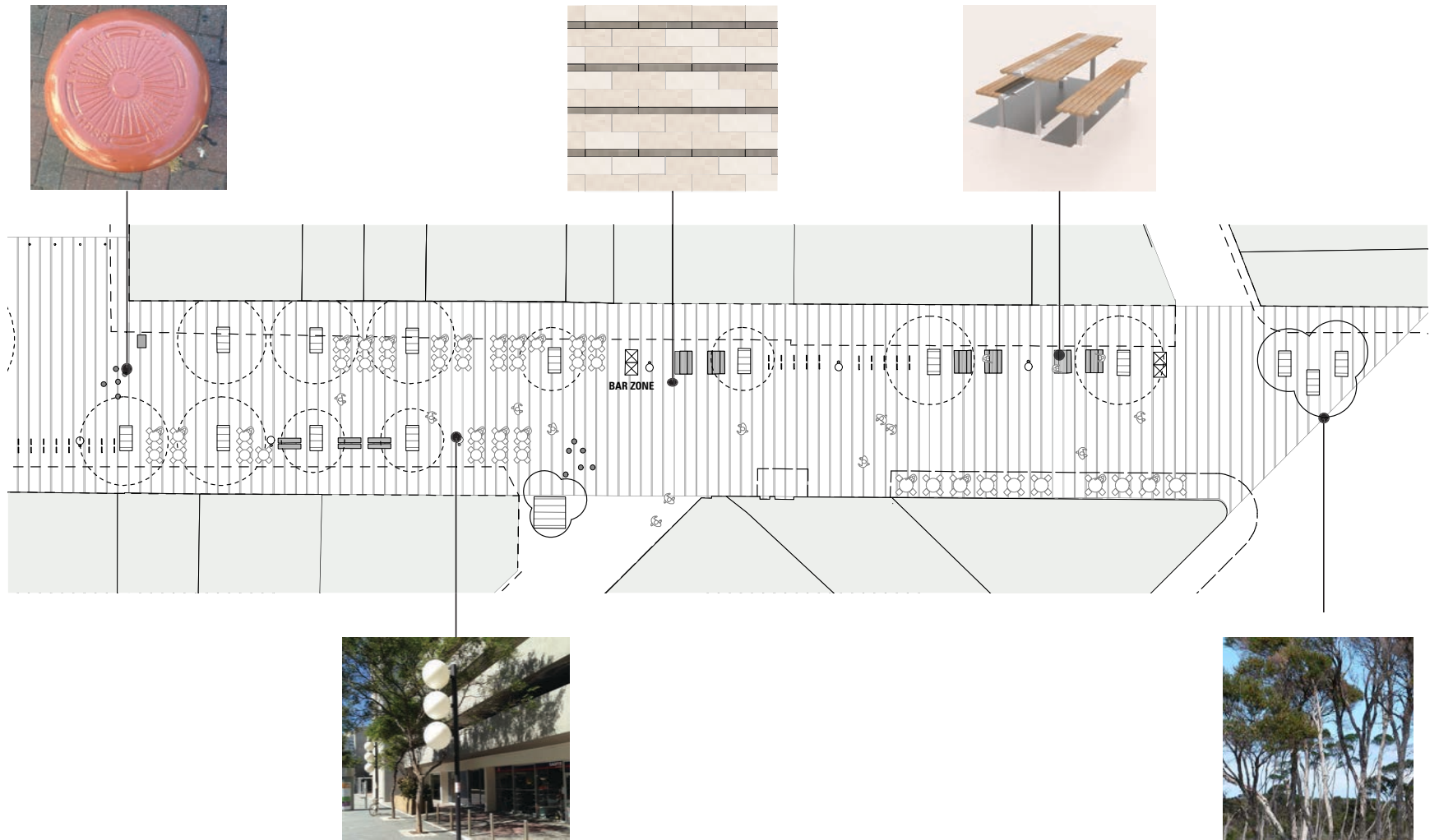


## 5.0 SOCIAL STREET PLAN



Social Street extends from Central Avenue to The Corso and is characterised by its more intimate width and the clustering of restaurants, takeaways, bars and pubs. This part of Sydney Road is already successful so the design retains most of the existing street elements while building-in flexibility that allows the existing uses to spill into the street for alfresco dining. Much of the existing street furniture will be refurbished for re-use while the existing trees are retained to maintain the character. A new cluster of trees is proposed at the eastern end of the street to contain the space and provide a threshold element between Sydney Road and The Corso.

# 5.0 SOCIAL STREET KEY FEATURES



5.0  
SOCIAL STREET  
EXISTING





5.0  
SOCIAL STREET  
SKETCH



## 6.0 LIGHTING CONCEPT



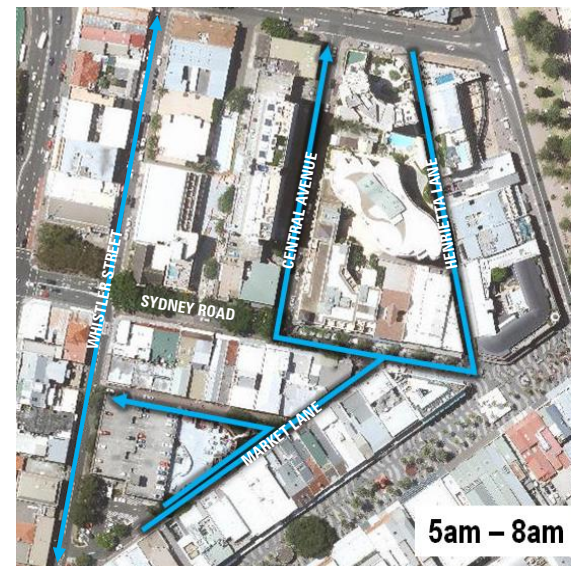
The lighting is designed to support the underlying character of each space. In the Gateway Plaza, the green gateway is illuminated to highlight the arrival point while a catenary light installation becomes the key feature to the public space. Spill lighting from the restaurants along each edge would supplement these two key lighting features.

In the High Street, the fig trees are up-lit and the Congregational Church facade illuminated to reinforce the character of this space. The uplit canopies of the trees will give a good sense of light from above while light spill from the shopfronts would further complement the atmosphere of the street. In the Social Street, the existing ball lights are retained and refurbished in-keeping with the more intimate and informal character of the space. These are positioned about the central pedestrian zone allowing the edge tenancies to create their own mood lighting within and adjacent their tenancies.

## 7.0 VEHICLE MOVEMENT



Ordinary vehicle movement (No vehicles over 6m)



Restricted service vehicle movement

The plan prioritises pedestrian movement over vehicle movements in accordance with the key principles of the Manly 2015 Master Plan. The 1-way vehicle loop system in Sydney Road will be closed to create the continuous pedestrian 'boardwalk' from Belgrave Street through to The Corso.

Ordinary vehicles will be restricted to two-way movements in Whistler Street and cul de sac arrangements for both Central Avenue and Henrietta Lane. Due to the narrowness of Central Avenue and Henrietta Lane, access to these streets would be limited to vehicles under 6m in length and prioritised for short stay parking and loading.

The servicing of shops and food and beverage outlets with larger commercial vehicles will be carried out between 5am and 8am in the morning. Restricted vehicle access into Sydney Road between Henrietta Lane and Central Avenue will be possible via either Market Lane east bound, or Henrietta south bound. In both cases, vehicles would exit via Central Avenue.