

Transport  
for NSW

# Manly Cove

## Manly Wharf 3 Upgrade and Former Manly Sea Life

### Consultation Summary Report

August 2022



[transport.nsw.gov.au](https://transport.nsw.gov.au)

OFFICIAL

# Table of Contents

<b>Executive summary .....</b>	<b>4</b>
<b>Manly Cove Place.....</b>	<b>5</b>
Manly Wharf 3.....	5
Project background .....	5
Project objectives for Manly Wharf 3 concept design .....	6
Former Manly Sea Life.....	7
Project background .....	7
Project objectives .....	8
Preferred concept design.....	8
<b>Engagement approach .....</b>	<b>9</b>
Engagement objectives .....	9
Engagement with the community during the outbreak of the coronavirus (COVID-19) .....	10
Engagement methods and activities.....	10
Stakeholder briefings and meetings.....	10
Media releases.....	11
Community update, flyers and posters.....	11
Social media .....	11
Webpage .....	11
Web portal.....	12
Wharf community pop-ups .....	12
Email blast.....	12
<b>Engagement outcomes .....</b>	<b>13</b>
Overview of key themes .....	16
Manly Wharf 3.....	17
Project proposal.....	17
Design considerations .....	18

Environmental considerations .....	20
Recreational berthing in Manly Cove.....	22
Placemaking considerations .....	22
Construction considerations .....	23
Former Manly Sea Life.....	25
Project proposal.....	25
Design considerations .....	26
Environmental considerations .....	26
Recreational berthing in Manly Cove.....	28
Placemaking considerations .....	29
Summary of feedback received outside project scope .....	30
<b>Next steps.....</b>	<b>31</b>
<b>Appendices .....</b>	<b>32</b>
Appendix A Community update.....	32
Appendix B Community update (distribution area map).....	38
Appendix C Flyer .....	39
Appendix D Poster .....	40
Appendix E Social media posts .....	41
Appendix F Summary of feedback received – Manly Wharf 3.....	42
Appendix G Summary of feedback received – Former Manly Sea Life.....	47



## Executive summary

Transport for NSW (Transport) is carrying out two separate projects in the Manly Cove area as part of the \$205 million NSW Government stimulus funding for maritime infrastructure and safety upgrades. This is to improve the access to and along the Cove for all of the community, including those with assisted and unassisted mobility needs. The projects involve an upgrade of Manly Wharf 3, and work to enhance the area of the former Manly Sea Life site.

Manly Wharf 3 would be upgraded as part of the Transport Access Program (TAP) so people with mobility needs, prams or suitcases can safely access ferries or other commercial services at the wharf. The proposed upgrade has been designed to seamlessly fit with the surrounding buildings and landscape with a gangway to a hydraulic platform at Wharf 3 and fixed waiting area, customer seating, weather protection at the entrance to the wharf.

The former Manly Sea Life building is not suitable for reuse and will be removed. Transport would like to enhance the Manly West Esplanade precinct area and reconnect the Pavilion and heritage buildings with the beach by removing the aquarium building and extending the boardwalk width for outdoor recreational activities. This proposal plans to reunite the beautiful heritage buildings on the West Esplanade with the waterfront, while expanding the boardwalk with space for recreational activities.

As part of the project development process, early consultation was carried out with the local communities, stakeholders, and Manly Cove users. Anticipating community interest in the proposals, an online interactive platform was used by Transport so the community could contribute ideas, provide feedback, and comment on both designs. The proposals were on display from 15 December 2021 to Friday 28 January 2022.

This consultation summary report provides an outline of the engagement activities carried out during this phase and the feedback received relating to the upgrade of Manly Wharf 3 and the former Manly Sea Life site. We received over 200 comments from the community and stakeholders during the consultation period. A summary of key feedback themes included:

- Support for the upgrade at Wharf 3 so it can become more accessible for everyone to use including people with mobility issues
- Support for the proposed enhancement of the former Manly Sea Life site
- Considerations that may be integrated into the proposed design
- Potential impacts to marine habitats and biodiversity in Manly Cove
- Design considerations for improved public amenities
- Positive comments relating to Manly Wharf 3 and the consideration of providing a facility to allow small boats to be able to pick up and drop off passengers.

We would like to thank the community for participating in this round of consultation. Transport will consider all feedback received during the display period that is within project scope. Feedback received related to reinstating the harbour pool and former boardwalk while being acknowledged, is not part of the project scope of works.

# Manly Cove Place

Manly Cove is an iconic and locally significant place. People and vessels have been part of Manly accessing the Cove by sea for centuries and continue to do so.

Transport is planning two separate projects, Manly Wharf 3 and former Manly Sea Life, as part of the \$205 million NSW Government stimulus funding for maritime infrastructure. These projects will include safety upgrades, improved access to and along the Cove for all people including those with assisted and unassisted mobility needs.

Transport is planning to work on these projects concurrently, so Manly Cove continues to support the local community and those who wish to visit to work, rest or play.

## Manly Wharf 3

### Project background

The existing wharf at Manly Wharf 3 is a wooden jetty with tidal steps. The wharf originally started life as a cargo wharf in the 1850s and was then changed to a “fun pier” in 1931, which included a Ferris wheel and carousel. In 1989 it became a ferry wharf, primarily used by private operators who provide public ferry transport services on behalf of Transport as well as commercial ferry services.

Wharf 3 is currently used as an alternative wharf for ferry services (both regulated and contracted services) when Wharf 2 is undergoing maintenance activities. Wharf 3 can be booked by private owners and commercial operators such as whale watching, to embark and disembark passengers using the Maritime Wharf booking system in 15 minutes blocks. While the Wharf booking system indicates it is not a heavily utilised wharf, it has been noted that private vessels access this wharf informally.

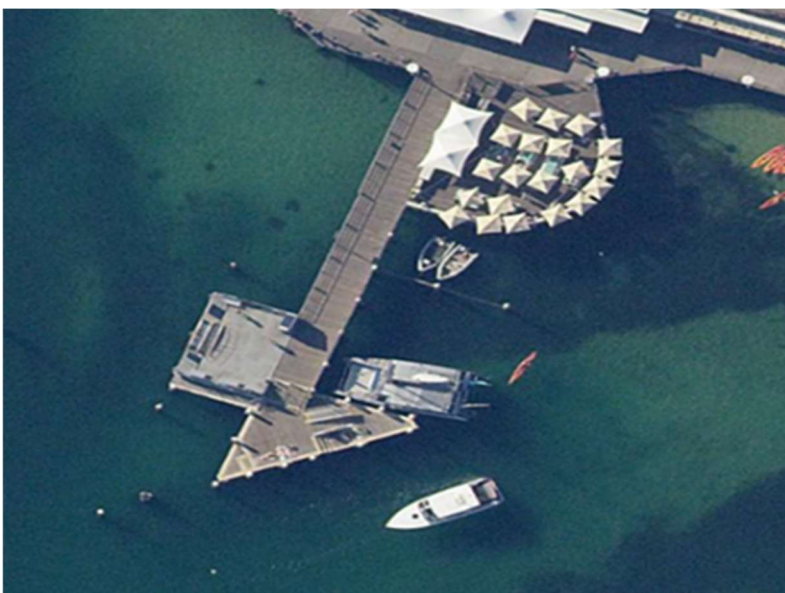


Figure 1: Aerial view of the existing Wharf 3

From the landside, the wharf can be accessed via a path at the entrance of the main wharf complex through the main Manly Wharf precinct building. The wharf may also be accessed from the eastern side.

Existing risks and accessibility issues at Wharf 3 include:

- the existing wharf is a set of fixed platforms and steps which is not accessible for customers with mobility issues or people with prams without assistance
- during inclement weather and rough wave conditions it is difficult for vessels to safely berth against the existing structure
- difficulty for customers embarking and disembarking during poor weather conditions
- no sheltered waiting area
- limited adaptability of the existing wharf for vessels of different sizes.

### **Project objectives for Manly Wharf 3 concept design**

The proposed Manly Wharf 3 upgrade has been designed to:

- be accessible for all customers using the wharf
- improve customer amenities and waiting areas
- improve services for customers and operators using the wharf
- cater for sea level rises
- be functional with a respectful design theme that considers the heritage precinct and Aboriginal and non-Aboriginal history of Manly Cove.

Due to the wind and wave movements the proposed Manly Wharf 3 upgrade will include a fixed waiting area, customer seating, weather protection and gangway leading to a hydraulic platform.

The new roof structure will be sympathetic to the heritage precinct and character of the surrounding buildings and maritime landscape. Ramps and paths would be installed to connect to the nearby interchanges. Most of the existing wharf structure would be removed as part of this proposal.

In the concept design presented for stakeholder and community feedback, we have highlighted an area where recreational and smaller commercial vessel berthing opportunities may be available for inclusion in the final design.

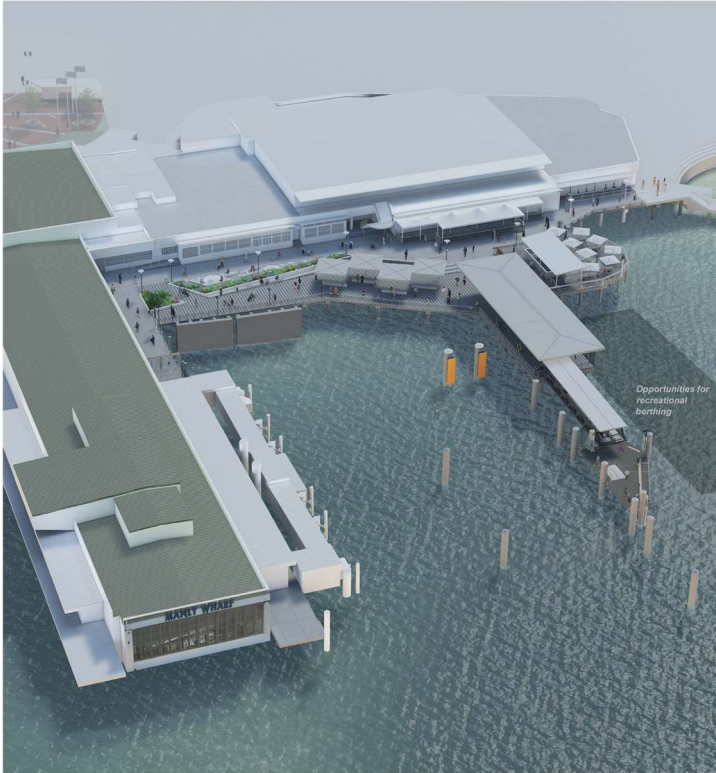


Figure 2: Proposed concept design for Manly Wharf 3 Upgrade

## Former Manly Sea Life

### Project background

The aquarium was purpose built in the 1960s and housed marine life until it was closed in 2018. The Manly Sea Life Sanctuary was a public aquarium located in Manly, Sydney, Australia. It featured sharks, giant stingrays, sea turtles, little penguins and other marine life. It also allowed guests to take part in Shark Dive Xtreme, where they could swim with grey nurse sharks over three metres long.

Since the Sea Life aquarium building was closed in 2018, it has remained vacant and is not fit for reuse. The aquarium building is dilapidated, and it still houses custom built tanks and enclosures not easily adapted to a future new use. The building also blocks sight lines to the heritage buildings behind.

In September 2020, the NSW Government announced it was working on plans to enhance the site.



Figure 3: View of the existing former Sea Life aquarium building

### **Project objectives**

The following objectives have been identified for the Former Sea Life site:

- enhance and improve public waterfront access
- maintain and celebrate the heritage of the area, including Connecting with Country in the design
- protect the natural environment
- provide a safe, family friendly and active edge to the West Esplanade for users of all ages, including people with accessibility needs to enjoy
- improve the quality and functionality of the West Esplanade for recreational and commercial purposes
- improve placemaking and facilitate activation of the Manly Cove precinct and support its connection with Manly Town Centre.

### **Preferred concept design**

Transport would like to enhance the Manly West Esplanade precinct area and reconnect the Manly Cove Pavilion (State Heritage building) with the beach by removing the aquarium building and extending the boardwalk with enough width for outdoor dining and a recreational edge.

This proposal would provide a safe, family friendly place for the West Esplanade area, which maintains and celebrates the local heritage of the area. The possibility of an inclusion of a wharf structure for pick-up and drop-off of recreational vessels at the site is still under review.



Figure 4: Artist's impression (indicative only - subject to design development and consultation)



# Engagement approach

This communication and engagement approach was developed by Transport for its projects in Manly Cove area. This approach provides alignment and consistency in engagement with shared stakeholders and community and is based on 6 engagement phases including:

- Stage 1** - (July and August 2021) –Preliminary design development and investigations -Early engagement with key stakeholders to brief them on the Manly Wharf 3 project and seek information.
- Stage 2** - (October 2021) –Full public announcement of both projects (Manly Wharf 3 and Former Manly Sea Life)
- Stage 3** - (October 2021) –Concept design development, geotechnical and other site investigations for both sites
- Stage 4** - (December 2021 – January end 2022) -Stakeholder engagement and public consultation on the preferred Concept Designs
- Stage 5a** - (Second Half 2022) –formal public consultation on the Manly Wharf 3 REF to seek feedback from stakeholders and the community
- Stage 5b** - (Late 2022) –formal public consultation on the Former Sea Life site REF to seek feedback from stakeholders and the community
- Stage 6** - (2023) –Manly Wharf 3 and Former Manly Sea Life site commence construction

## Engagement objectives

The engagement objectives of the project are to:

- Develop open communication channels with key stakeholders and the community.
- Raise awareness of the project benefits for the Manly Wharf 3 upgrade, including improved safety for vessels, access for customers with assisted and unassisted mobility needs and travel experience for all customers.
- Inform stakeholders and the community about the constructability considerations of the Manly Wharf 3 upgrade and also enhancement of the former Manly Sea Life site as a result of the challenging site and environmental complexities and sensitivities.
- Understand local needs and values associated with Manly Cove from businesses, residents, vessel operators, the community, Northern Beaches Council, and other key stakeholders.
- Engage with key stakeholders on Aboriginal and non-Aboriginal heritage aspects around the wharf, the former Manly Sea Life and Manly Cove.
- Engage with the maritime community and authorities on the future use of the surrounding Cove.
- Engage with DPI Fisheries and NSW Heritage Council.

## Engagement with the community during the outbreak of the coronavirus (COVID-19)

This consultation and engagement was carried out during the COVID-19 pandemic and several lockdowns last year. When consulting on the projects, Transport followed the NSW Health advice to determine the safe and appropriate way to approach community consultation for the proposals in response to COVID-19. This meant traditional forms of face-to-face engagement such as door knocking could not be carried out. Instead, web-based platforms, social media, and an interactive portal was used to display the proposed concept designs for both projects. In addition, four community pop up sessions were held in the main wharf complex at the entry to Wharf 1.

### Engagement methods and activities

This section provides an overview of the engagement methods carried out during the community consultation period from 15 December 2021 to 28 January 2022.

#### **Stakeholder briefings and meetings**

Early and regular consultation with the following key stakeholder groups was carried out from July 2021 through to December 2021, to understand their specific needs associated with the proposals and integrate into the designs where appropriate. These groups included:

- Northern Beaches Council
- Head lessees of each site at Manly Wharf 3 and the Manly Pavilion
- Private Ferry Operators (currently providing a Public Transport Service from Wharf 3)
- Heritage Council NSW
- DPI Fisheries
- Metropolitan Local Aboriginal Land Council (MLALC)
- Commercial Vessels Association
- Manly Art Gallery and Museum (via Council)
- DPI Fisheries
- Recreational Vessels Association
- Transdev Sydney Ferries
- Boating Industry Australia (BIA).

Each stakeholder group identified above was consulted at least twice over this period.

## Media releases

Two media releases were issued for the project. A joint media release was issued by The Hon Andrew Constance MP, former Minister for Transport and The Hon James Griffin MP, Member for Manly on 1 October 2021.

A second media release was issued on 15 December 2021 by The Hon James Griffin MP, Member for Manly, announcing State stimulus funding for the proposed Manly Wharf Upgrade and enhancement of the Former Sea Life site.

These media releases were featured in the following news outlets.

Publication	Date	Link
James Griffin MP website	1 October 2021	<a href="https://www.jamesgriffinmp.com/taking_manly_cove_into_the_future">https://www.jamesgriffinmp.com/taking_manly_cove_into_the_future</a>
Transport for NSW website	15 December 2021	<a href="https://roads-waterways.transport.nsw.gov.au/about/news-events/news/ministerial/2021/211001-making-manly-cove-more-accessible.html">https://roads-waterways.transport.nsw.gov.au/about/news-events/news/ministerial/2021/211001-making-manly-cove-more-accessible.html</a>

Table 1: Overview of project media releases

## Community update, flyers and posters

A community update, flyer, and posters were distributed around the Manly area on 15 December 2021.

Details of the distribution area and copies of the community update, flyer and poster can be found at Appendix A Appendix B Appendix C and, Appendix D .

## Social media

Information regarding the project and its consultation period, including links to the project website and “Have Your Say’ portal, were distributed via social media.

Transport also published two geo-targeted posts using social media platforms to advertise the Community Consultation. The first post was live from 17 December 2021 to 23 December 2021, and the second post was live from 13 January 2022 to 19 January 2022.

Copies of the social media posts can be found at Appendix E .

## Webpage

A dedicated project webpage was established for Manly Cove. Page URL (<https://roads-waterways.transport.nsw.gov.au/projects/manly-wharf-3-upgrade/index.html>)

This page was updated on 15 December 2021 to include information on the preferred concept design, a Community Newsletter and a link to the online portal and feedback form.

### **Web portal**

An interactive web portal for the project was created where visitors to the platform could view images of before and after the upgrade for both Manly Wharf 3 and the former Manly Sea Life site. The web portal hyperlink is available via the Manly Cove website.

### **Wharf community pop-ups**

Manly Wharf and former Manly Sea Life projects held four community pop-up sessions with COVID-19 measures in place as advised by NSW Health guidelines in December 2021 and January 2022.

### **Email blast**

An email blast was sent out on 15 December 2021 via Manly Cove mailbox to 35 key stakeholders, advising them of the public consultation on the preferred concepts for the Manly Cove proposals and the opportunity for the community to “have your say” during the defined consultation period on the preferred concept designs.

An additional email blast was sent out on 15 December 2021 via Manly Cove mailbox to 170 registered community members informing them of the opportunity for the community to “have your say” on the preferred concept designs during the defined consultation period.

## Engagement outcomes

Several communication channels were used to reach the highest number of the local community and businesses to encourage their feedback on our proposals. This included via an online feedback form, dedicated project email address, and project phone line.

Feedback received during the consultation period will help to inform the development of concept designs for both projects, which will be placed on public exhibition for further feedback later this year.

### Summary of engagement reach:



#### One on one meetings with key stakeholders

<b>Northern Beaches Council</b>	Early July, September, Late November
<b>Commercial Vessels Association</b>	July 2021
<b>Private Ferry Operators</b>	July 2021
<b>Heritage Council NSW</b>	End July 10 November 2021
<b>DPI Fisheries</b>	End July, September 2021
<b>Aboriginal Groups</b>	End July, Late November 2021



#### Community update/flyers

**13,653** copies distributed - Community update (print and online)

**200** flyers A5 sized distributed in Manly

**300** flyers size A4 delivered during the community sessions



#### Social media (facebook) post

17-23 December 2021

Reach: **11,112**

Targeted suburbs: **Balgowlah, Collaroy, Manly, Mona Vale, Narrabeen, Manly Vale, Queenscliff, Warriewood**

Engagements: **371** link clicks, **21** reactions, **2** shares, **10** comments, **1** save.



## Social media (facebook) post

13-19 January 2022

Reach: **11,739**

Targeted suburbs: **Balgowlah, Collaroy, Manly, Mona Vale, Narrabeen, Manly Vale, Queenscliff, Warriewood**

Engagements: **354** link clicks, **30** reactions, **13** shares, **20** comments, **2** save.



## Website Data (nswroads.work/manly-cove)

From 15 December to 28 January – Consultation period

**11,570** pageviews

**9,654** Unique pageviews

**863** Unique visitors

**62% Mobile, 30.65% Desktop** and **7.33% table** devices used

**1002** Total sessions

**2000** Most common postcode



## Interactive Online Portal

(live on 15 December 2021)

Stat value	Headline
<b>6073</b>	Total pageviews
<b>1480</b>	Unique visitors
<b>1837</b>	Total sessions
<b>00:03:50</b>	Average session length
<b>2000</b>	Most common postcode
<b>3.31</b>	Average pages per visit
<b>6</b>	Total shares
No. Visits	Referrer/visitors
<b>379</b>	Facebook
<b>371</b>	Government sites
<b>139</b>	Instagram
<b>275</b>	Media/ Newspapers
<b>108</b>	Search engine
<b>11</b>	LinkedIn
<b>1283</b>	Total



## Feedback received via the website form

**161** total comments. Please note each submission has been divided into the below categories

**124** comments relating -Support of the projects

**25** comments relating –Design Considerations

**24** comments relating -Environment including penguins, sea horses, trees, and heritage

**18** comments relating –Recreational Berthing

**18** comments relating –Place making

**18** comments not related to the project

**20** comments relating –Not supportive of the projects



## Wharf community pop ups

*Monday 20 December 2021*

**260** interactions, **150** detailed conversations with individual members of the public.

*Tuesday 21 December 2021*

**300** interactions **100** detailed conversations with individual members of the public.

*Thursday 20 January 2022, 8am and 11am.*

**90** detailed conversations with individual members of the public.

*Friday 21 January 2022, 8am and 11am,*

**60** detailed conversations with individual members of the public.

## Overview of key themes

The key themes identified from the community feedback received and Transport response is outlined below.

A detailed summary is provided in Appendix F and Appendix G of this report.



**Project proposal** – This theme captures general comments and feedback received from the community and stakeholders with respect to the proposed upgrade as a whole.



**Design considerations** – This theme captures comments and feedback received from the community and stakeholders that relate to design related elements of the Manly Wharf 3 upgrade.



**Environment considerations** – This theme relates to the issues about biodiversity (flora and fauna) during construction and operation as well as the heritage and visual impact considerations.



**Recreational berthing in Manly Cove** – This theme refers to use of Manly Cove for broader recreational boating uses, and access for a wide range of private recreational vessels.



**Placemaking considerations** – This theme refers to feedback received about the proposal and the Manly Place area.



**Construction considerations** – This theme refers to feedback related to construction of the proposal and possible impacts.



## Manly Wharf 3



### **Project proposal**

#### *Issue raised*

Respondents provided comments on impacts to businesses including traffic and parking, requested to be provided with design images, and questioned the alignment of the proposal with other local plans for the project. Specific comments included:

- Concern about impacts to existing facilities near Wharf 3 and impacts to businesses and lease holders
- Concern about impacts to traffic and parking near the wharf during construction
- Request for Transport to align the plans for Manly Cove with other plans in the area, including those of Northern Beaches Council
- Comment about the use of Wharf 2 and 3 for emerald class and fast ferries respectively.

#### *Response*

The Manly Wharf upgrade project is an initiative to provide a better experience for public transport customers. Transport is in the process of improving wharves across Sydney. The aim is to upgrade these structures so that they are modern, safe, and accessible.

Transport is in the process of finalising the concept design and undertaking an environmental impact assessment for the proposed Manly Wharf 3 upgrade. Once the environment impact assessment is complete and impacts understood, a Review of Environmental Factors (REF) will be prepared and displayed for public comment. More design information will be provided once the concept design and environmental assessment have been further developed.

Transport acknowledges concerns raised about potential impacts on nearby activities and will consider these in its ongoing planning for the project. Every effort will be made to minimise impacts to the surrounding environment and businesses.

The wharf design will be refined to accommodate opportunities to minimise all environmental impacts including visual impacts, as well as heritage, noise and vibration, biodiversity and to sympathise with surrounding structures.

Transport will carry out a socio-economic and traffic assessments as part of the REF. These assessments will identify and assess the potential construction and operational impacts of the proposed Manly Wharf 3 Upgrade. Mitigation measures will also be developed to minimise potential impacts.

The design of Wharf 3 will provide access to all vessels, including the Emerald Class and fast ferries, under the wharf booking system arrangement, however it will not accommodate the Freshwater class of ferries.



## **Design considerations**

### Vessel considerations

#### *Issue raised*

Respondents raised issues regarding vessel considerations including:

- Request that the design considers an accessible floating pontoon for all people including those with mobility issues
- Request that the design addresses current access issues for vessels that may be using the wharf, including freeboard, water taxis, catamarans, and other commercial vessels
- Request that design considers the passenger boarding and disembarking processes at Wharf 3
- Concern for business impacts including from any loss of commercial moorings.

#### *Response*

The primary purpose of the upgrade is so the wharf is accessible for all customers. The wharf design aligns with the Disability Standards for Accessible Public Transport 2002 (DSAPT). The Standards set out minimum accessibility requirements for public transport providers to ensure that people with a disability have equivalent access to public transport services.

The design of Wharf 3 will provide access to the majority of vessels, including the Emerald Class and fast ferries. However, it is not designed to provide access for the Freshwater class of ferries. Manly Wharf 3 would be used primarily for commercial commuter services, under the wharf booking system and would provide drop off and pick up support for charter vessels, cruises, and other commercial recreational activity vessels (such as whale watching). Following community feedback, an additional multi-level platform structure will be included in the design to allow for safe drop-off and pick-up for small commercial vessels (e.g., water taxis) and recreational vessels at a range of tidal levels.

Transport acknowledges concerns raised about potential impacts on nearby moorings. Every effort will be made to minimise impacts to the surrounding moorings; however, some moorings may need to be relocated, either temporarily during construction or permanently for the new structure. This will be assessed during detailed design in consultation with NSW Maritime moorings team.

A maritime traffic management plan, which considers the safety of all vessel users in and around the proposed new wharves, as well as access and length of stay, would be developed by the maritime operations team and implemented prior to operation.

#### Other design considerations

##### *Issue raised*

Respondents raised issues regarding other design matters including:

- Request for improved public amenities, provision of public waiting areas and ticketing booths
- Request to consider lighting, safety, and surveillance measures in the design to aid in crime prevention, including request to consider crime prevention through environmental design (CPTED) principles
- Request to consider using sustainable materials
- Request to consider how best to future proof the Wharf, accounting for growing capacity and number of passengers.

##### *Response*

The wharf will be designed to enhance passenger amenity. The main waiting area at the new Manly Wharf 3 will include a roof canopy to provide shelter from the elements. The new main waiting area will also feature seating, including accessible waiting options, such as benches with armrests that are compliant with the *Disability Discrimination Act 1992* (DDA), and wheelchair waiting spaces. The design provides space for mobile ticketing facilities and allows space for any future installation of fixed location Opal readers.

The CPTED assessment, will be undertaken during the design development process. It will identify security opportunities in the design development process and the need for any surveillance (CCTV cameras) that may be required.

As the design for the project progresses, a wide range of sustainable materials and finishes will be considered, ensuring the final proposal considers maintenance, durability and lifespan implications.

The wharf has been designed to meet the predicted 2056 vessel and passenger demand. The key elements of the wharf are designed to last for 50 years, and a climate change risk assessment was carried out to inform design requirements to accommodate predicted sea level rise.



## **Environmental considerations**

### **Biodiversity**

#### *Issue raised*

Respondents raised issues regarding impacts to flora and fauna. Specific issues included:

- Concern about biodiversity impact (including fairy penguins, sea grass & marine life) and requested that any environmental assessment consider and assess the impacts to aquatic ecology around Manly Cove
- Concern about impacts to the natural marine habitat including from demolition works, construction works, and operations
- Request to consider the preservation of local vegetation and natural features along the foreshore and adjoining areas.

#### *Response*

The Manly Wharf 3 project will be subject to an environmental impact assessment under an REF process. Minimising any impact to biodiversity has been a key consideration in the design development process. Winter and summer seagrass surveys have been carried out to assist in determining a suitable position for the proposed new wharves to minimise any potential aquatic impacts.

The purpose of the environmental assessment is to:

- identify potential environmental impacts at an early stage in project development,
- assess and evaluate the potential impacts of construction and operation of the Wharf on the environment,
- develop measures to avoid or minimise potential environmental impacts by:
  - modifying the design of the Wharf and
  - identifying safeguards and management measures to be implemented during construction and operational phases.

The REF would consider the proposal and its environmental impacts from the perspective of biodiversity, Aboriginal cultural heritage, landscape character and visual amenity, traffic and transport, noise and vibration, socio-economic aspects, and well as consideration of potential cumulative impacts.

Once the investigations are complete and the REF is finalised, the REF will be placed on public exhibition at which time the community will have an opportunity to comment on the proposal and its impacts.

The REF will also set a requirement for the successful contractor to prepare a construction environmental management plan that identifies the safeguards and

management measures that will be put in place during construction to protect the environment.

#### Heritage and visual considerations

##### *Issue raised*

Respondents raised issues regarding heritage considerations. Specific issues included:

- Comment about the cultural value of the Gayamay (Manly) area, and its significance as the site of one of the earliest recorded contacts with British People of the First Fleet
- Comment regarding the opportunity for the wharf upgrade to share the Aboriginal and non-Aboriginal heritage of the area
- Comment about the design of the new Wharf and the general visual impact it may have including the placement and size of the new wharf, height of structures, and lighting, on the surrounding environment and views across Sydney Harbour.

##### *Response*

Transport understands the significance of Aboriginal and European heritage in the Manly Cove area. A comprehensive Indigenous and non-Indigenous heritage assessment will be undertaken as part of the REF for the project. The REF and the Statement of Heritage Impact will be placed on public exhibition for stakeholder and community feedback.

The proposed upgrade of Manly Wharf 3 will consider opportunities to celebrate the heritage of the area, including Connecting with Country in the design.

We are currently working with the Metropolitan Local Aboriginal Land Council and other stakeholder groups to identify and consider aspects of cultural heritage in our proposal. We are engaging an independent consultant to ensure the project is compliant with the Government Architect New South Wales *Connecting with Country Draft Framework* (2020).

Transport will continue to work with the Aboriginal community to identify opportunities to enable ongoing involvement and to consider opportunities to incorporate Aboriginal culture and language into the design of the project.

The new wharf upgrade will be designed to allow for pedestrian movement and social spaces, connected to a public promenade that links the Wharf 1-2 entry with the commercial platform at Wharf 3.

The design principles used for the Wharf upgrade considered visual and heritage impacts as well as efficiency and customer amenity.

Visual impacts from the proposal were considered during the design development. For example, the main roof canopy has been sized and positioned to minimise visual impact and will incorporate 'heritage green' elements to match the existing Manly Wharf buildings, providing a structure that is sensitive to existing surrounds. The additional smaller shelters on the promenade have been removed from the design. In addition, the inclusion of glazing rather than non-transparent structures will be considered in the detailed design. As part of the environmental assessment, several safeguards would be proposed to minimise visual impacts.



### **Recreational berthing in Manly Cove**

#### *Issue raised*

Respondents requested access for smaller vessels, supported how recreational access may benefit the local economy, raised issues regarding recreational berthing in Manly Cove, and identified potential impacts. Specific issues included:

- Comment in support of recreational berthing due to the opportunities for the local economy
- Request for increased access for smaller recreational and commercial vessels
- Request to limit or prohibit access to the wharf for recreational vessels.

#### *Response*

Transport acknowledges positive comments about providing the additional berthing facility for recreational access for smaller recreational vessels.

Following community feedback, a multi-platformed structure with ramps (Wharf 4) has been included in the design to allow for safe drop off and pick up for recreational vessels and small commercial vessels (e.g., water taxis) at a range of tidal levels.



### **Placemaking considerations**

#### *Issue raised*

Respondents raised issues regarding the use of public spaces surrounding the Wharf upgrade and its potential impact on amenity. Specific issues and comments included:

- Comment that the community is happy at the prospect of the Wharf 3 upgrade and how it will contribute positively to the local community and businesses
- Comment that the proposed wharf upgrade will support the interconnectivity of the Manly wharf interchange
- Concern that Manly Wharf 3 upgrade, including the increasing commercialisation of the precinct will increase anti-social behaviours.

### *Response*

Transport acknowledges the comments about how the Wharf upgrade and design are a great vision, that the upgrade will contribute positively to the area, and how it will support the transport interchange at the wharves.

The new wharf is designed to consider placemaking and other urban design opportunities, it will incorporate a 'slow space', which is connected to a public promenade that links the Wharf 1-2 entry with the commercial platform at Wharf 3. The intention of the 'slow space' is to provide a space for people to informally meet and gather. The design would be developed further, in conjunction with the local community and indigenous groups, to provide an opportunity for the incorporation of telling of indigenous stories through its design.

Public safety is an important part of the design of Wharf 3. A CPTED assessment has been undertaken to identify safety measures for incorporation into the wharf upgrade including lighting, closed circuit television (CCTV) security cameras and tactile ground surface indicators, which are used to guide vision impaired customers safely around the wharf area and onto vessels. The design principles used for the Wharf upgrade considered visual and heritage impacts as well as efficiency and customer amenity.



### **Construction considerations**

#### *Issue raised*

Respondents raised issues regarding the construction of the wharf and its ongoing operation during the construction period. Specific issues included:

- Request to ensure consistent access to ferry services during construction
- Request to limit construction during peak summer periods
- Concern regarding potential impacts to parking during construction
- Concern about potential impacts to the natural marine habitat during construction.

#### *Response*

Transport acknowledges customer concerns relating to access to ferry services during construction. Construction work would likely occur outside of the peak summer season to reduce impact to ferry customers and the local community when the Manly precinct is at its busiest.

Transport will undertake a traffic assessment as part of the REF. The assessment will identify and assess the potential construction and operational impacts of the proposed Manly Wharf Upgrade. Mitigation measures will also be developed to minimise the potential impacts on parking during construction.

Where there is a need to temporarily impact parking and access during construction, the community would be notified in advance.

Minimising any impact to biodiversity has been a key consideration in the design development. The REF will identify the impacts and recommend safeguards to be implemented pre-construction, and during demolition and construction of the Wharf, to protect the marine environment.



## Former Manly Sea Life



### **Project proposal**

#### *Issue raised*

Respondents raised comments regarding proposal for the demolition of the Former Sea Life site:

- Significant support for the demolition of the former Manly Sea Life building was received
- Some comments were received that did not support the project including the demolition of the existing building. These specifically refer to suggestions of the reuse of the existing building, and/or refers to the building as part of Manly place.
- Concern about environmental and marine impact due to works required to demolish the building.

#### *Response*

Since the Sea Life aquarium building was closed in 2018, it has remained vacant and is not fit for reuse. The aquarium building is dilapidated, and it still houses custom built tanks and enclosures not easily adapted to a future new use. The building also blocks sight lines to the heritage buildings behind.

After working with key stakeholders such as Northern Beaches Council and referring to its heritage plan, Transport recognises the importance of creating a place, which respects the local cultural heritage, connects people to land and water and creates a prominent waterfront location in Manly.

Transport acknowledges concerns raised about potential environmental impacts and will consider these in its ongoing planning for the project. Every effort will be made to minimise impacts to the surrounding environment and businesses.

More design information will be provided once the concept design and environmental assessment have been further developed.



## **Design considerations**

### *Issue raised*

Respondents raised comments regarding the design of the project, including:

- Request to preserve the existing footprint of the Former Sea Life building structure and incorporate this into the boardwalk design
- Request for a wider path beside the Manly Pavilion and widened steps
- Request to consider the use of sustainable / recycled materials in the design
- Request for improved public amenities, such as more public toilets.

### *Response*

The existing structure with purpose built below ground tanks is not fit for purpose therefore, the decision was made to remove the building. To remove the building, the tanks also need to be removed so it is not possible to leave remnants of the existing structure.

The design for the enhancement of the area is to be further developed, this would include pathways, features including materials will be further developed as part of the project.

Provision of new public toilets is not part of the scope for this project. Public toilets are currently available next to the Manly Cove Pavilion.



## **Environmental considerations**

### Flora and fauna

#### *Issue raised*

Respondents raised comments regarding potential for impacts to flora and fauna in Manly Cove, including:

- Potential impacts to marine habitats and biodiversity in Manly Cove (including fairy penguins, sea grasses, seahorses and other marine life)
- Potential impacts on existing trees in Manly Cove.

### *Response*

The former Manly Sea Life project will be subject to an environmental impact assessment process. Detailed environmental studies will form part of the assessment, which will:

- Identify potential environmental impacts at an early stage in project development
- Assess and evaluate the potential impacts of construction and operation of the wharf on the environment
- Develop measures to avoid or minimise potential environmental impacts by:
- Modifying the design and
- Identifying safeguards and management measures to be implemented during construction and operational phases.

Once finalised, the community will have an opportunity to comment as part of the public exhibition of the environmental impact assessment. As part of the environmental impact assessment process Transport will consider all required approval processes.

### Heritage considerations and visual impact

#### *Issue raised*

Respondents raised comments regarding heritage considerations, including:

- Potential impacts to Indigenous heritage
- Potential impacts to European heritage
- Request to restore, make prominent and maintain the visual character of heritage buildings on the western edge of Manly Cove
- Request for acknowledgement of Indigenous history to be incorporated into the design.

#### *Response*

Design principles used for the proposal have considered both heritage and visual impacts.

A Statement of Heritage Impact (SOHI) will be prepared as part of the environmental impact assessment process. The SOHI will assess potential impacts of the proposal on items of heritage value in proximity to the site.

Potential visual impacts will be assessed as part of the landscape character and visual impact assessments. These assessments will evaluate the potential impacts on viewpoints in Manly Cove. A number of safeguards have been proposed to reduce impacts on visual amenity.

The proposal at the former Manly Sea Life site will consider maintaining, and celebrate the heritage of the area, including Connecting with Country in the design.

We are currently working with the Metropolitan Local Aboriginal Land Council and other traditional stakeholder groups to identify and consider aspects of cultural heritage in our proposal. We have engaged an independent consultant to ensure the project is aligned

with the Government Architect New South Wales *Connecting with Country Draft Framework* (2020).

Transport will continue work with the Aboriginal community to identify opportunities to enable ongoing involvement, and to incorporate Aboriginal culture and language into the design of the project.

#### General environmental concerns

##### *Issue raised*

Respondents raised comments regarding broader environmental impacts of the project on Manly Cove, including:

- Request for stricter monitoring of issues related to littering and rubbish collection
- Request to ban line fishing in this area of Manly Cove
- Request to establish and maintain a safe area in Manly Cove for snorkelling.

##### *Response*

All comments received have been noted and where relevant to the project, will be considered. Comments that are the responsibility of other authorities will be passed on



#### **Recreational berthing in Manly Cove**

##### *Issue raised*

Respondents raised comments about both the existing berthing options, and the potential for expanding recreational berthing near the former Manly Sea Life site, including:

- Some support and objection for the provision of facilities for small vessel berthing in Manly Cove
- Request to expand availability of current public moorings available in Manly Cove
- Concern regarding potential impacts of increased recreational berthing on other recreational uses of West Esplanade beach (e.g., swimming, snorkelling)
- Concern regarding potential negative impacts of recreational berthing on marine life and habitats.

##### *Response*

Arrangements for recreational vessel drop off and pickup in Manly Cove requires environment impact assessment for consideration. The provision of additional moorings within Manly Cove is not within project scope. All comments received related to recreational vessels will be passed to the relevant teams within Transport Maritime Operations.

Potential impacts associated with recreational berthing in Manly Cove will be investigated and considered during the environmental impact assessment stage of the project.



### **Placemaking considerations**

#### *Issue raised*

Respondents raised comments regarding the use of public spaces in and around Manly Cove, and the potential impacts of works at the former Sea Life site on public amenity of the space, including:

- Requests to provide dining options, seating and relaxation spaces for the community along the proposed new extended boardwalk
- A few requests were received for the former Sea life site not be used for dining options or for any kind of events.

#### *Response*

Transport is exploring options to enhance the Manly West Esplanade precinct area, reconnecting the Pavilion and heritage buildings with the beach by removing the aquarium building and extending the boardwalk. This proposal would provide a safe, family friendly West Esplanade area, which maintains and celebrates the local heritage of the area.

## Summary of feedback received outside project scope

A number of comments were also received in relation to items outside the scope of works for both the Manly Wharf 3 Upgrade and Former Manly Sea Life site. This feedback largely focused on:

- Request to maintain or reinstate elements of the Manly Cove precinct including:
  - Historic ferries
  - Connection between the Wharf and the Former Manly Sea Life site
  - Construction of ocean baths.
- Request to provide additional public amenities
- Request for the inclusion of public swimming areas.
- Request to reinstate the former boardwalk and harbour pool which were washed away in the 1970s
- Request to retain and repurpose the existing aquarium building for a number of community and/or commercial uses
- Request for the provision of pontoons/platform in a netted swimming area at West Esplanade for recreational use.

### *Response*

The proposed Manly Wharf 3 upgrade is an initiative to provide a better experience for public transport customers, Transport is in the process of improving wharves across Sydney. The aim is to upgrade these structures, so they are modern, safe, and accessible.

The primary purpose of the upgrade is so the wharf is accessible from a compliance perspective for all customers.

Transport is proposing to enhance the Manly West Esplanade precinct area and reconnect the Pavilion and heritage buildings with the beach by removing the former Sea Life building and extending the boardwalk with enough width for outdoor dining and a recreational edge.

The existing aquarium structure is not fit for reuse; therefore, the decision was made to remove the building.

The harbour pool and former boardwalk are not part of the current scope of works.

Transport has noted all feedback received during this round of consultation and will, where relevant, share these comments with appropriate stakeholders for consideration.

## Next steps

Feedback provided during this round of consultation and engagement offers a valuable insight into the issues and opportunities of importance to the community. These insights will be used to inform future stages of the project.

For both projects, work has started on the designs and carrying out different environmental studies. These studies will be used in the development of the two REFs.

We plan on carrying out further consultation later this year when we put the REFs for these projects on public display.

Transport will continue to update community and stakeholders as the project progresses.

# Appendices

## Appendix A Community update



Manly Cove drone shot

Manly Cove is an iconic and locally significant place. People and vessels have been part of Manly accessing the Cove by sea for centuries and continue to do so.

Transport for NSW is carrying out two separate projects in Manly Cove, as part of the \$205 million NSW Government stimulus funding for maritime infrastructure and safety upgrades to improve the accessibility to and along the Cove for all of the community including those with assisted and unassisted mobility needs. The projects involve:

- an upgrade of Manly Wharf 3, and
- work to enhance the area of the former Manly Sea Life site.

### Have your say

We invite you to have your say on these projects. Both projects are on display for community feedback until **5pm Friday 28 January 2022**.

To learn more, visit the project page, view our plans and leave your feedback at [nswroads.work/manly-cove](https://nswroads.work/manly-cove)

email: [manlycove@transport.nsw.gov.au](mailto:manlycove@transport.nsw.gov.au)  
web feedback form on our website





Proposed concept design for Manly Wharf 3 Upgrade

The NSW Government under the Transport Access Program is planning to upgrade Manly Wharf 3, so all customers can safely use the Wharf.

### **Manly Wharf 3**

Customers with mobility needs currently have difficulty accessing ferry or other commercial services from Manly Wharf 3.

A concept design for a full wharf upgrade has been developed and we are inviting the community and customers to have their say on the suggested changes

## Proposed Concept Design for Manly Wharf 3

Benefits of the upgrade include:

- improved access for mobility impaired customers and customers with prams
- improved customer amenity such as protection from the wind, rain and sun, seating and waiting areas
- improved safety for customers
- quicker and more efficient boarding and disembarking
- improved pedestrian access around the wharf
- more efficient interchange with other modes of public and private transport
- consideration of Manly place making opportunities
- catering for future sea level rise.

### Key design features

Due to the wind and wave movements the proposed Manly Wharf upgrade will include a hydraulic platform with a fixed waiting area, customer seating, weather protection and gangways.

New canopies and roofs will be sympathetic to the heritage precinct and character of the surrounding buildings and maritime landscape.

Ramps and paths would be installed to connect to the nearby interchanges. Most of the existing wharf structure would be removed as part of this proposal.

The proposed Wharf upgrade has been designed to:

- provide accessibility for all customers using the wharf
- improve customer amenities and waiting areas
- improve services for customers and operators using commercial vessels
- cater for sea level rises
- be functional with a respectful design theme that considers the heritage precinct and history of Manly Cove.

While the priority of the NSW Government's Transport Accessibility Program is to provide accessibility for all customers using our public transport network, Transport for NSW has identified an opportunity to plan for the future growth in commercial and recreational vessel usage at Manly Cove.

In the concept design presented for stakeholder and community feedback, we have highlighted an area where recreational and smaller commercial vessel berthing opportunities may be available for inclusion in the final design. We encourage stakeholders and the community to provide suggestions as to how this additional area may be used to maximise recreational and commercial berthing opportunities.

## Environment

We recognise the importance and sensitivity of the local Manly environment. Our proposed design has carefully considered the potential impacts of the construction footprint on the local environment particularly the aquatic ecology.

The impacts will be further assessed as part of the strategic environmental investigations that will shortly commence to support the preparation of the Environmental Impact Assessment for both projects.

The associated impacts of the proposal on the environment and our approach to mitigate and minimise these impacts will be detailed in the environmental assessment.

The community will have an opportunity to review the environmental assessment and provide a submission as part of its public display, which is expected to occur in the first half of 2022.

## Construction

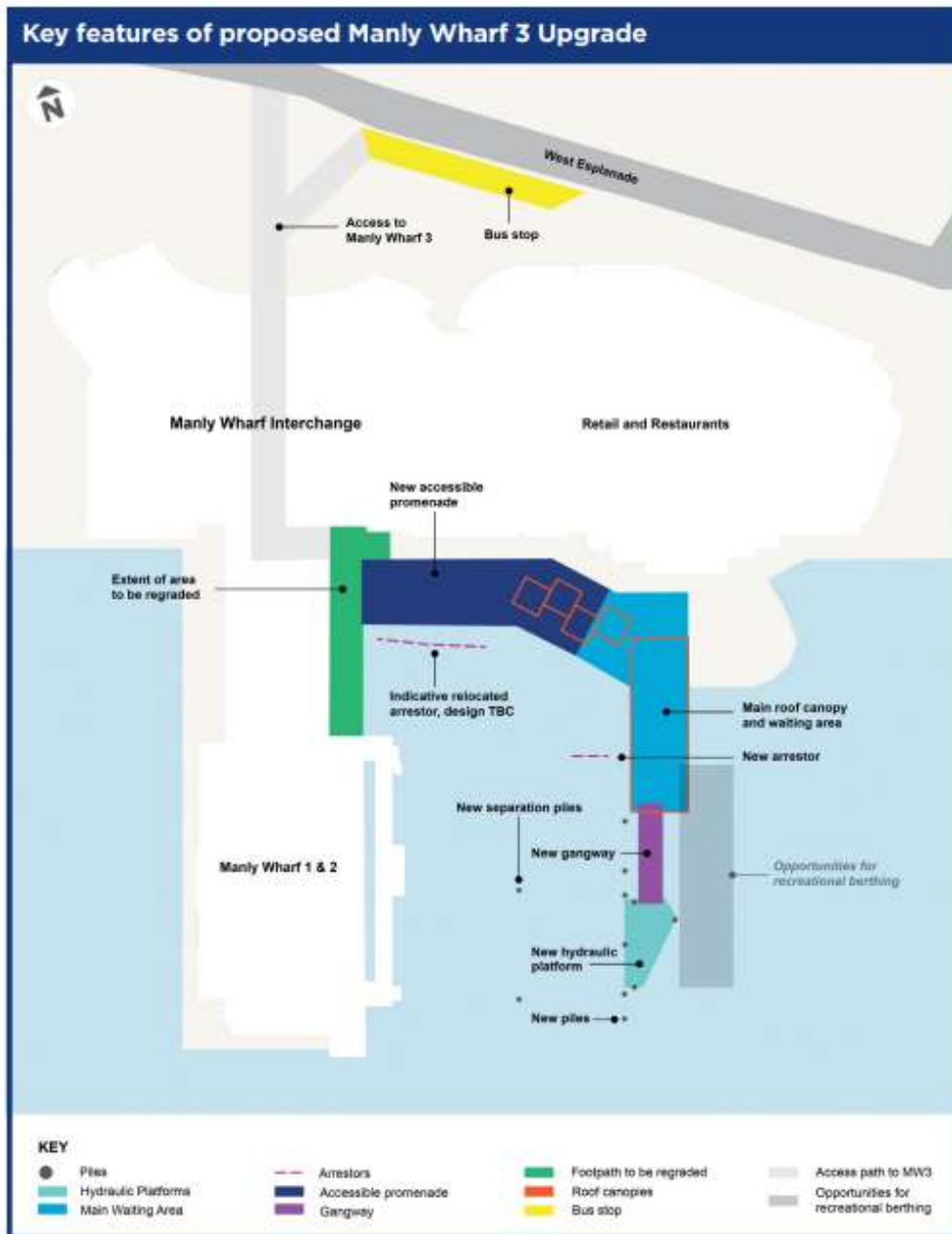
We are committed to minimising impacts and disruption to customers, businesses, and the community during the proposed works.

More information and the opportunity to provide feedback on the construction of the proposed upgrade will be provided as part of the Environmental Impact Assessment consultation process.

Construction of the Manly Wharf 3 is expected to start in 2023 (subject to funding), which would take up to eight months to complete based on previous wharf upgrades.

## Accessible Public Transport

The Transport Access Program is an initiative to provide a better experience for public transport customer by delivering accessible, modern, secure and comfortable transport that connect with other transport infrastructure. It is a legal requirement that all public transport infrastructure, including wharves, have fully compliant disability access by December 2022.





Artist's impression (indicative only - subject to design development and consultation)

### Former Manly Sea Life site

Transport for NSW is the owner of the former aquarium Manly Sea Life and the Manly Pavilion.

Since the Sea Life aquarium building was closed in 2018, it has remained vacant and is not fit for reuse. The aquarium building is dilapidated, and it still houses custom built tanks and enclosures not easily adapted to a future new use. The building also blocks sight lines to the heritage buildings behind.

Transport recognises the importance of creating a place, which respects the local cultural heritage, connects people to land and water and creates a prominent waterfront location in Manly.

We would like to enhance the Manly West Esplanade precinct area and reconnect the Pavilion and heritage buildings with the beach by removing the aquarium building and extending the boardwalk with enough width for outdoor dining and a recreational edge. This proposal would provide a safe, family friendly for the West Esplanade area, which maintains and celebrates the local heritage of the area.

There is also the opportunity to improve public waterfront access with the possibility of the inclusion of a wharf structure for pick up and drop off of recreational vessels. We are seeking your feedback on our plans and potential uses for the site.

### Recreational Berthing opportunities at Manly Cove

Transport for NSW has identified an opportunity to include designated recreational drop up and pick up zones within Manly Cove.

We are seeking your feedback about where and what the designs for recreational drop off zones could look like.

## We invite you to come and meet the team where you may ask questions and learn more about the proposed projects.

**When:** Monday 20 December 2021 between Bam and Ilam.

Tuesday 21 December 2021 between Bam and Ilam.

We will also be holding some further sessions in the same location on Thursday 20 and Friday 21 January 2022 between Bam and Ilam.

Social distancing measures will be in place to protect the safety of our staff and the community, we ask you to respect these measures when you visit our team.

## Next steps

Transport will be working on these projects concurrently, to minimise disruption and so that Manly Cove continues to support the local community and those who wish to visit to work, rest or play.

### Manly Wharf 3

We will consider all feedback received during the public display of the concept design for Manly Wharf 3.

Feedback will be considered in the refinement of the design and during the development of the Environmental Impact Assessment.

The community will be able to provide further feedback on the environmental impacts when the Environmental Impact Assessment is placed on public display in the first half of 2022.

### Former Manly Sea Life site

We will consider all feedback in line with our plans for the site. In 2022, we will review feedback received and carry out further investigations around the proposed site to support the development of the Environmental Impact Assessment.

Our office will be closed from the 25 December 2021 to 10 January 2022.

## Contact us

If you have any questions, would like more information about this project or to subscribe for updates please contact the project team:

 1800 770 973 (during business hours)

 [manlycove@transport.nsw.gov.au](mailto:manlycove@transport.nsw.gov.au)

 [nswroads.work/manly-cove](https://nswroads.work/manly-cove)



If you require the services of an interpreter, please contact the Translating and Interpreting Service on 131 450 and ask them to call the project team on 02 6923 6664.

December 2021




Privacy Transport for NSW ("TfNSW") is subject to the Privacy and Personal Information Protection Act 1998 ("PPPI Act") which requires that we comply with the Information Privacy Principles set out in the PPPI Act. All information in correspondence is collected for the sole purpose of assisting in the delivery of this project. The information received, including names and addresses of respondents, may be published in subsequent documents unless a clear indication is given in the correspondence that all or part of that information is not to be published. Otherwise Transport for NSW will only disclose your personal information, without your consent, if authorised by the law. Your personal information will be held by Transport for NSW at 27 Argyle Street, Parramatta. You have the right to access and correct the information if you believe that it is incorrect.


Appendix B Community update (distribution area map)



Appendix C Flyer



Transport for NSW  
**Manly Cove**  
December 2021



Manly Cove drone shot

Manly Cove is an iconic and locally significant place. People and vessels have been part of Manly accessing the Cove by sea for centuries and continue to do so.

Transport for NSW is carrying out two separate projects in Manly Cove, as part of the \$205 million NSW Government stimulus funding for maritime infrastructure and safety upgrades to improve the accessibility to and along the Cove for all of the community including those with assisted and unassisted mobility needs.

The projects involve:

- an upgrade of Manly Wharf 3, and
- work to enhance the area of the former Manly Sea Life site.

### Have your say

We invite you to have your say on these projects. Both projects are on display for community feedback until 5pm Friday 28 January 2022.

To learn more, visit the project page and leave your feedback at [nswroads.work/manly-cove](https://nswroads.work/manly-cove) and also view our plans via our web portal [nswroads.work/manlycove](https://nswroads.work/manlycove)

You can also share your feedback by:  
email: [manlycove@transport.nsw.gov.au](mailto:manlycove@transport.nsw.gov.au)

### Contact us

If you have any questions, would like more information about this project or to subscribe for updates please contact the project team at:

📞 1800 770 973 (during business hours)

@ [manlycove@transport.nsw.gov.au](mailto:manlycove@transport.nsw.gov.au)

🌐 [nswroads.work/manly-cove](https://nswroads.work/manly-cove)



If you need help understanding this information, please contact the Translating and Interpreting Service on 131 450 and ask them to call us on 1800 770 973.

Appendix D Poster



Manly Cove drone shot

Manly Cove is an iconic and locally significant place. People and vessels have been part of Manly accessing the Cove by sea for centuries and continue to do so.

Transport for NSW is carrying out two separate projects in Manly Cove, as part of the \$205 million NSW Government stimulus funding for maritime infrastructure and safety upgrades to improve the accessibility to and along the Cove for all of the community including those with assisted and unassisted mobility needs. The projects involve:

- an upgrade of Manly Wharf 3, and
- work to enhance the area of the former Manly Sea Life site.

### Have your say

We invite you to have your say on these projects. Both projects are on display for community feedback until **5pm Friday 28 January 2022**.

To learn more, visit the project page, view our plans and leave your feedback at [nswroads.work/manly-cove](https://nswroads.work/manly-cove).

You can also share your feedback by:  
email: [manlycove@transport.nsw.gov.au](mailto:manlycove@transport.nsw.gov.au)  
web feedback form: on our website

**Contact us**

If you have any questions, would like more information about this project or to subscribe for updates please contact the project team at:

1800 770 973 (during business hours)

[manlycove@transport.nsw.gov.au](mailto:manlycove@transport.nsw.gov.au)

[nswroads.work/manly-cove](https://nswroads.work/manly-cove)






131 450


If you need help understanding this information, please contact the Translating and Interpreting Service on 131 450 and ask them to call us on 1800 770 973.




## Appendix E Social media posts

 **Transport for NSW**   
17 December 2021 · 

👉 We're planning to upgrade Manly Wharf 3 & to enhance the former Manly Sea Life site! Have your say on the proposal by 5pm 28 January. 🙌



NSWROADS.WORK/MANLY-COVE  
**Manly Cove proposal**  
Have your say by 5pm 28 Jan 

[Learn More](#)

 **Transport for NSW**   
Sponsored ·  

Have your say on the Manly Cove projects! Meet us at the Manly Wharf on Thursday 20 & Friday 21 January 2022 between 8am and 11am.



FRI, 21 JAN  
**Manly Cove Projects**  
20 Jan-21 Jan · Manly wharf [INTERESTED](#)

Appendix F Summary of feedback received – Manly Wharf 3

Theme	Overview of feedback
Project proposal	<ul style="list-style-type: none"> <li>• General support of the project.</li> <li>• Concern about potential impacts on traffic and parking near the wharf.</li> <li>• Concern about potential impacts on businesses and lessees at Manly Wharf due to changes in amenity and visual impacts.</li> <li>• Concern regarding potential impacts to the ‘SUPBALL courts’ at East Esplanade beach.</li> <li>• Concern regarding the use of government funding to upgrade a wharf that will be used by private vessels.</li> <li>• Request for direct access to the wharf be considered in the design.</li> <li>• Request for Manly Wharf 2 to be used for the Emerald class ferries and for Wharf 3 to be used by Manly Fast Ferries.</li> <li>• Request for an integrated transport solution for the wharf area and surrounds examined as part of this project.</li> <li>• Request that Transport continues early conversations and consultations with recognised representatives of Aboriginal groups throughout the project, to enable ongoing involvement of the Aboriginal community.</li> <li>• Request for Manly West Esplanade Heritage Activation Plan be considered with future design.</li> <li>• Comment that the design images need to be clearer to better understand the proposal.</li> </ul>
Design considerations	<ul style="list-style-type: none"> <li>• Concern regarding boarding and disembarking processes at Wharf 3.</li> <li>• Concern that the concept design is 'bulky' and could be further simplified.</li> <li>• Concern that the design, including the placement and size of the new wharf, will have a negative visual impact on views from different Manly Wharf locations to various views nearby and across Sydney Harbour.</li> <li>• Concern that the proposed green roof is not in alignment with the overall design.</li> <li>• Concern for business impacts including from any loss of commercial moorings.</li> <li>• Concern about visual impact from visiting vessels.</li> <li>• Request for copper roof to be highlighted in the design.</li> <li>• Request for improved public amenities (including toilets, lockers for boaters, showers, water fountains, bicycle parking, playgrounds, seating, shelters etc.).</li> </ul>

Theme	Overview of feedback
	<ul style="list-style-type: none"><li>• Request for fire safety measures to be considered in the design.</li><li>• Request that ticketing, including waiting areas for ticketing, inclusion of ticket booths, and the gangway are included as considerations in the design.</li><li>• Request that design considers waiting areas, roof covering for commuters and other users, electronic information boards, access to electricity and water for commercial operators.</li><li>• Request to consider lighting, safety, and surveillance measures in the design to aid in crime prevention, including request to consider CPTED principles.</li><li>• Request to remove rocks south of Manly Wharf 3 which currently create an obstruction for approaching ferries.</li><li>• Request to consider using sustainable materials for seating.</li><li>• Request that design considers access for smaller recreational vessels including yachts, and all abilities (floating pontoon).</li><li>• Request that the design addresses current access issues for vessels that may be using the wharf, including freeboard, water taxis, catamarans and other commercial vessels.</li><li>• Request that Wharf 3 is used for services to Circular Quay, and Darling Harbour as well as other commercial vessel uses, including for ad hoc charter groups.</li><li>• Request for fully accessible pick up / drop off zone.</li><li>• Request for the provision of sewage pump out facilities for commercial vessels to supplement the existing facilities at King Street Wharf.</li><li>• Request to consider how best to future proof the Wharf, accounting for growing capacity and number of passengers.</li><li>• Comment that the new design will restore Manly's iconic heritage.</li></ul>

Theme	Overview of feedback
Environment considerations	<ul style="list-style-type: none"> <li>• Concern that works may need Northern Beaches Council and DPI Fisheries approvals and necessary permits due to the presence and location of 'seahorse hotels'.</li> <li>• Concern about biodiversity impact (including fairy penguins, sea grass &amp; marine life).</li> <li>• Concern about impacts to the natural marine habitat from demolition works, construction works, and operation.</li> <li>• Concern about the removal of the existing wooden jetty at Wharf 3.</li> <li>• Request that any harm to threatened species and/or marine vegetation is to be documented and reported to the Fisheries Officer.</li> <li>• Request that any environmental impact assessment refer to the Test of Significance for the endangered penguin population. It should be prepared in accordance with s7.3 of Biodiversity Conservation Act 2016 and address the potential direct and indirect impacts to penguins arising from both construction and operation.</li> <li>• Request to consider maintaining the visual character of the area and special features to support local tourism and maritime services.</li> <li>• Request to consider the local vegetation and preservation of natural features along the foreshore and adjoining areas, noise, amenity impacts, incompatible land uses, and compatibility with maritime uses when considering mitigation measures.</li> <li>• Request to maintain vegetation in and around the Wharf and Manly Cove area.</li> <li>• Request that as Manly Cove supports a variety of marine habitats and biota, that any environmental assessment should fully characterise and assess the aquatic ecology of Manly and consider relevant policies and guidelines such as Fisheries NSW Policy and Guidelines for Fish Habitat Conservation and Management (2013 update).</li> <li>• Request that any proposal for the area should consider and consult with the local Indigenous community.</li> <li>• Comment about the global cultural value of the Gayamay (Manly) area, and its significance as the site of one of the earliest recorded contacts with British People of the First Fleet.</li> </ul>
Recreational berthing in Manly Cove	<ul style="list-style-type: none"> <li>• Request for increased access for recreational and smaller commercial vessels.</li> <li>• Request to limit or prohibit access to the wharf for recreational vessels.</li> <li>• Comment in support of recreational berthing due to the opportunities for the local economy.</li> </ul>

Theme	Overview of feedback
Place making considerations	<ul style="list-style-type: none"><li>• Concern that Manly Wharf 3 upgrade, including the increasing commercialisation of the precinct will increase anti-social behaviours.</li><li>• Concern that the design, including the placement and size of the new wharf, height of structures, lighting, addition of seating and other structures and layout of the public promenade, will have a negative impact on amenity.</li><li>• Comment that the community is happy at the prospect of the Wharf 3 upgrade and how it will contribute positively to the local community and businesses.</li><li>• Comment that the proposed wharf upgrade will support the interconnectivity of the Manly wharf interchange.</li></ul>
Construction considerations	<ul style="list-style-type: none"><li>• Concern regarding potential impacts to parking during construction.</li><li>• Concern about potential impacts to the natural marine habitat during construction due to sedimentation, disturbance of contaminated sediments or materials, removal of aquatic habitat, shading and lighting from vessels moored at the wharf, noise barriers to fish passage, location of anchors and mooring apparatus, timing of works, and other works or operations that may cause disturbance for example to seahorse mating.</li><li>• Request to limit construction during peak summer periods.</li><li>• Request to ensure consistent access to ferry services during construction.</li></ul>

Theme	Overview of feedback
Out of scope	<ul style="list-style-type: none"><li>• Concern that the design does not consider provisions for the Emerald class vessels at Manly Wharf 1.</li><li>• Concern regarding the use of government funding for a wharf that will be used by private vessels.</li><li>• Request to return and keep all the Manly ferry classes in operation.</li><li>• Request to return the wharf to the fun pier.</li><li>• Request for design elements that connect the Manly Wharf and the Sea Life building (board walk, a harbour/pool area etc.).</li><li>• Request for inclusion of additional public moorings.</li><li>• Request to retain old ferry wharf and older style ferries to maintain character.</li><li>• Request to include pontoon with youth activities (water slides) or alternative swimming areas for public use.</li><li>• Request to not include boardwalk/waterslides etc connection to the wharf and the Pier due to its outdated design.</li><li>• Request to re-build the walkway from federation point to the wharf.</li><li>• Request to remove beach access steps on eastern side of wharf.</li><li>• Request to upgrade existing narrow steps directly to beach on eastern the side of wharf.</li><li>• Request for an ocean bath for harbour lap swimming as you may have seen in historic pictures.</li><li>• Request for new diving facilities on the southside of Wharf 3 to be included.</li><li>• Request for Transport to replace all remaining swing moorings in Manly Cove with seagrass-friendly moorings and investigate possible rehabilitation of fragmented Posidonia beds near Manly Wharf 3.</li><li>• Request for better control over recreational boats overstaying their allotted “drop off” time.</li><li>• Request that ongoing operational and maintenance costs of the new wharf remain a responsibility of Transport for NSW.</li><li>• Request for whale watching and other commercial services to use Wharf 3.</li></ul>

Appendix G Summary of feedback received – Former Manly Sea Life

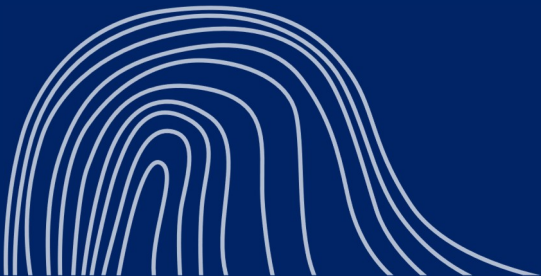
Theme	Overview of feedback
Project proposal	<ul style="list-style-type: none"> <li>• General support of the project including the demolition of the existing building</li> <li>• Not in support of the project including the demolition of the existing building</li> <li>• Concern about potential impacts on traffic and parking around Manly Cove</li> <li>• Request to return Sea Life to operation</li> </ul>
Design considerations	<ul style="list-style-type: none"> <li>• Concern regarding recreational vessel berthing</li> <li>• Request for pick up / drop off zone for boats and recreational vessel berthing</li> <li>• Request to consider the heritage and indigenous people of the area in the design through the inclusion of informational signage and artwork</li> <li>• Request for improved public amenities (including shelters/shade, toilets, parking, storage lockers, benches, tables, water fountains, bicycle parking, playgrounds etc.)</li> <li>• Request to consider lighting, safety, and surveillance measures in the design to aid in crime prevention in Manly Cove</li> <li>• Request to preserve the existing footprint of the Former Sea Life building structure and incorporate this into the boardwalk design</li> <li>• Request for a storage facility for kayaks and SUP boards to be provided</li> <li>• Request for the provision of pontoons/platform in a netted swimming area at West Esplanade for recreational use</li> <li>• Request for a wider path beside the Manly Pavilion and widened steps</li> <li>• Request to consider the use of sustainable / recycled materials in the design</li> <li>• Request to incorporate elements of Manly's 'funky' style in the design</li> </ul>

Theme	Overview of feedback
Environment considerations	<ul style="list-style-type: none"><li>• Concern about potential impacts on biodiversity (including fairy penguins, sea grass, seahorses and other marine life)</li><li>• Concern about potential impacts to the natural marine habitat including from demolition works, construction works, and operation, such as from sedimentation, disturbance of contaminated sediments or materials, removal of aquatic habitat, shading and lighting from vessels moored at the wharf, noise barriers to fish passage, location of anchors and mooring apparatus, timing of works, and other works or operations that may cause disturbance for example to seahorse mating, and that conditions of consent should outline all measures to protect the environment</li><li>• Request for the removal of the She-oaks currently planted in the area as they create slip hazards</li><li>• Request to preserve elements of local heritage, maintaining the visual character of the area and acknowledge Aboriginal history (artwork opportunities/plaques)</li><li>• Request that potential impacts to threatened species and/or marine vegetation is documented and reported to the Fisheries Officer.</li><li>• Request that any environmental impact assessment refer to the Test of Significance for the endangered penguin population. It should be prepared in accordance with s7.3 of Biodiversity Conservation Act 2016 and address the potential direct and indirect impacts to penguins arising from both construction and operation.</li><li>• Request for stricter monitoring of issues related to littering and the implementation of innovative rubbish collection</li><li>• Request to preserve the existing palm trees</li><li>• Request to ban line fishing in this area of Manly Cove</li><li>• Request to establish and maintain a safe area in Manly Cove for snorkelling</li><li>• Request to remove of all the trees along the path behind the Art gallery and replace them for short native shrubs</li><li>• Request to restore and making prominent the iconic buildings on the western edge</li><li>• Request to consider impacts to both Indigenous and European heritage in the area</li></ul>



Theme	Overview of feedback
Recreational berthing in Manly Cove	<ul style="list-style-type: none"><li>• Suggestion for consideration to be given to expanding the existing public moorings available in front of the former Manly Sea Life site</li><li>• Support for the provision of facilities for small vessel berthing to allow further activation and accessibility to Manly Cove</li><li>• Request to keep the area open by limiting access to private and recreational vessels</li><li>• Concern for potential impacts to the safety of swimmers and snorkelers at Manly Cove if additional berths are provided</li><li>• Concern regarding the potential impacts of recreational berthing on marine life</li><li>• Concern regarding potential for additional boat traffic in Manly Cove due to increase in recreational berthing</li></ul>
Place making considerations	<ul style="list-style-type: none"><li>• Request to redevelop the former Sea Life site with provision of seating, dining areas, and spaces for relaxation</li><li>• Concern regarding restaurants being set up on the flat area in front of the Pavilion</li><li>• Request for more open space to music events, markets and public art in the Pavilion</li><li>• Concern about outdoor music/events at the extended boardwalk</li><li>• The area should not be used for dining or any events</li><li>• Concern about potential impacts of construction on traffic and parking for local residents</li></ul>

Theme	Overview of feedback
Out of scope	<ul style="list-style-type: none"><li data-bbox="636 280 2132 352">• Concern that possible restoration of the original boardwalk and harbour pool (destroyed in the 1974) could block access to the beach and restrict views to the harbour</li><li data-bbox="636 368 1883 400">• Request to not reinstate the Harbour Pool and Boardwalk from the Pavilion to the Wharf</li><li data-bbox="636 416 1585 448">• Request to return the existing aquarium building to its former use</li><li data-bbox="636 464 2092 576">• Request to retain and repurpose the existing aquarium building (i.e., Opera House, Surf Museum, Manly Shipwreck Museum and light room for the lighthouse, children's museum, casino, entertainment centre, environmental educational centre, junior rugby league club house, gallery, recreational uses etc.)</li><li data-bbox="636 592 1899 624">• Request to rebuild boardwalk, harbour pool and pontoons that were washed away in 1974</li><li data-bbox="636 639 1514 671">• Request for Manly Surf 'n Slide to be painted a darker colour</li><li data-bbox="636 687 1693 719">• Request for the provision of an affordable area for commercial businesses</li><li data-bbox="636 735 1957 767">• Request for light commercial vessel berthing to be provided at the former Manly Sea Life site</li></ul>



**© Transport for New South  
Wales**

Users are welcome to copy, reproduce and distribute the information contained in this report for non-commercial purposes only, provided acknowledgement is given to Transport for NSW as the source.

